

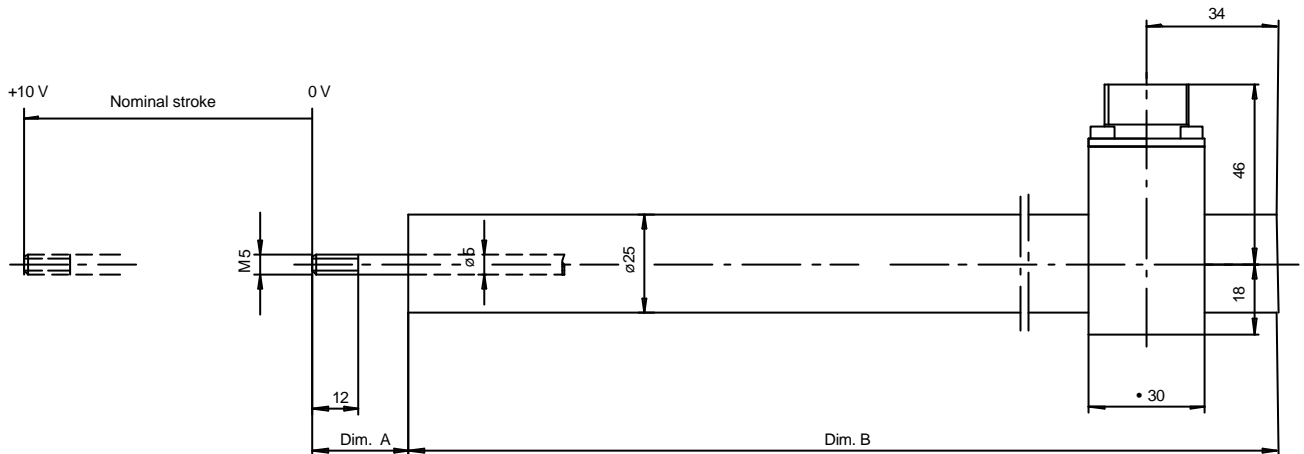
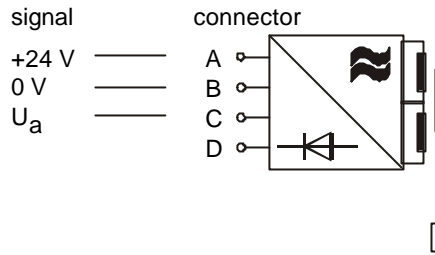
# Inductive displacement sensor

integral electronics    supply 22 ... 26VDC    output 0 ... 10V    rugged design

# DAE

# MESSOTRON

**radial connector**  
mating connector supplied



Example for ordering: DAE 100 R 0,25%

		DAE 25	DAE 50	DAE 100	DAE 150	DAE 200	DAE 250
Electrical stroke	mm	±12,5	±25	±50	±75	±100	±125
Max. mechanical stroke	mm	27	52	105	160	210	260
Dimension A	mm	30	30	30	30	30	30
Dimension B	mm	145	185	225	305	385	465
Transducer weight	g	240	300	360	500	610	750
Core weight	g	20	25	30	45	55	70
Supply **)	22 ... 26 VDC / 40 mA, stabilized						
Output signal ***)	0 ... 10 VDC (±10 VDC upon request)						
Allowable load	> 10 kOhm						
Static resolution	virtually infinite						
Cut-off frequency	100 Hz						
Linearity *)	±0,5% F.S.O. Option: ±0,25%						
Temperature coefficient of zero	±0,1% / 10K						
Temperature coefficient of span	±0,2% / 10K						
Operating temperature	0°C ... +60°C						
Protection class	IP 67 except for connector (IP 65)						

\*) Select option for order

\*\*) Please enquire 4-wire versions with a) +24VDC or b) ±15VDC / 40 mA, stab.

\*\*) please request explicitly: output ±10 VDC

<b>MESSOTRON</b> Hennig GmbH & Co. KG Industrie-Messtechnik Friedr.-Ebert-Str. 37, Tel.: (05257) 52331 D-64342 Sochheim-Jungenheim	DAE series 25 ... 1000 mm	Data sheet <b>32.01.00</b> Page 1
		Issue 09/03

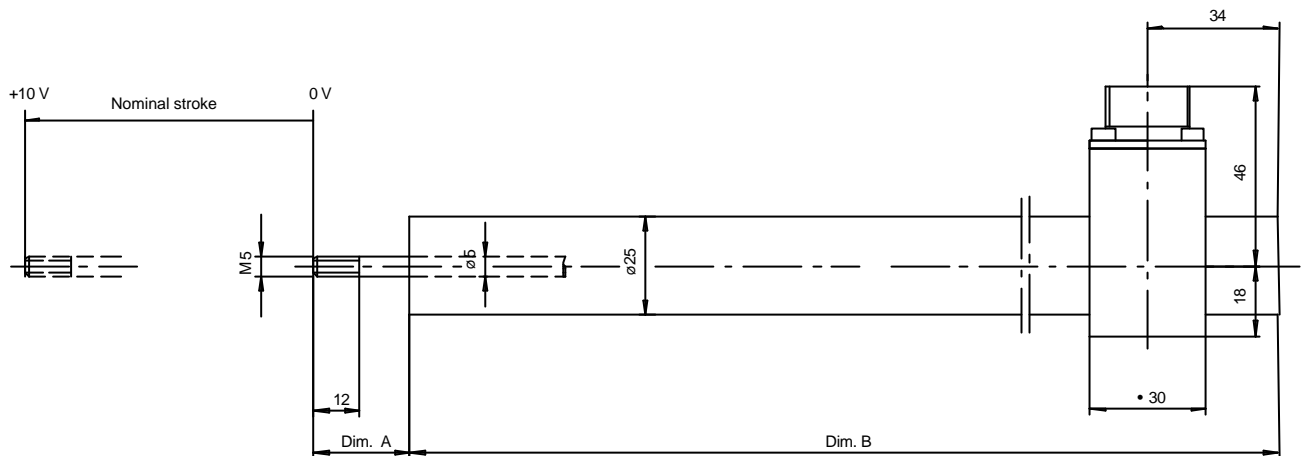
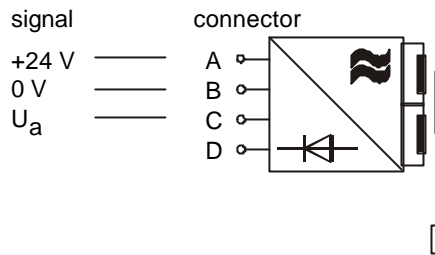
# Inductive displacement sensor

integral electronics    supply 22 ... 26VDC    output 0 ... 10V    rugged design

# DAE

# MESSOTRON

**radial connector**  
mating connector supplied



Example for ordering: DAE 500 R 0,25%

		DAE 300	DAE 400	DAE 500	DAE 600	DAE 800	DAE 1000
Electrical stroke	mm	±150	±200	±250	±300	±400	±500
Max. mechanical stroke	mm	315	420	520	630	830	1030
Dimension A	mm	40	40	40	40	40	40
Dimension B	mm	480	600	730	860	1120	1400
Transducer weight	g	800	1000	1200	1400	1800	2200
Core weight	g	85	105	125	145	190	230
Supply **)	22 ... 26 VDC / 40 mA, stabilized						
Output signal ***)	0 ... 10 VDC (±10 VDC upon request)						
Allowable load	> 10 kOhm						
Static resolution	virtually infinite						
Cut-off frequency	100 Hz						
Linearity *)	±0,5% F.S.O. Option: ±0,25%						
Temperature coefficient of zero	±0,1% / 10K						
Temperature coefficient of span	±0,2% / 10K						
Operating temperature	0°C ... +60°C						
Protection class	IP 67 except for connector (IP 65)						

\*) Select option for order

\*\*) Please enquire 4-wire versions with a) +24VDC or b) ±15VDC / 40 mA, stab.

\*\*) please request explicitly: output ±10 VDC

**MESSOTRON**  
Hennig GmbH & Co. KG  
Industrie-Messtechnik  
Friedr.-Ebert-Str. 37, Tel.: (05257) 52331  
D-64342 Sochheim-Jungenheim

DAE series  
25 ... 1000 mm

Data sheet  
32.01.00  
Page 2

Issue 09/03

Sensor customisation possible

Subject to change without prior notice  
09/03

# Inductive displacement sensor

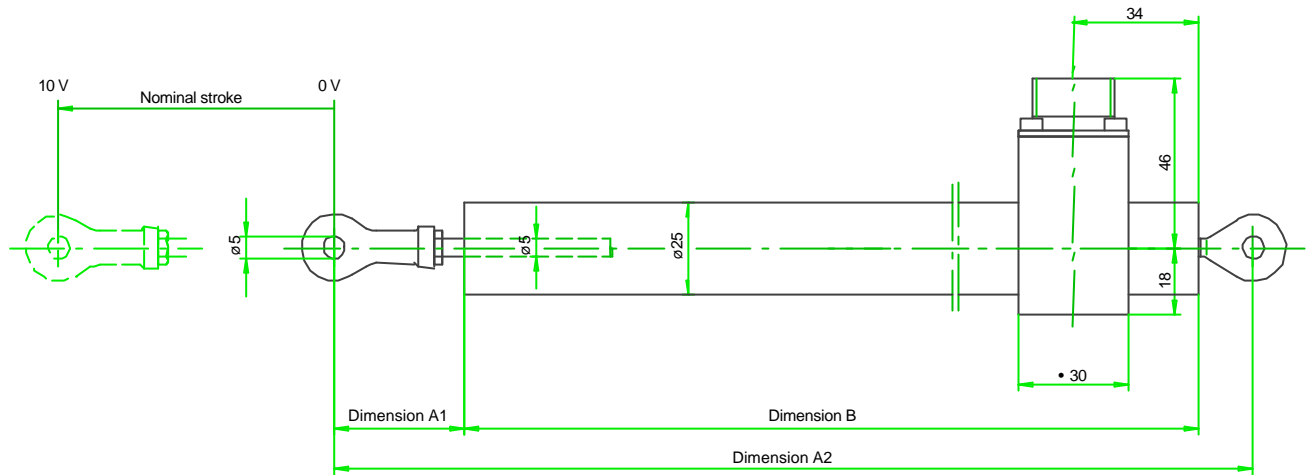
integral electronics  
 supply 22 ... 26VDC  
 output 0 ... 10 V  
 rugged design

# DAE

# MESSOTRON

## Version „DAE...G“ with ball eyes, guided core and radial connector

Mating connector supplied  
 ball eye on one-end-only optional



Example for ordering: DAE 500 RG 0,25%

		DAE 25	DAE 50	DAE 100	DAE 150	DAE 200	DAE 250
Dimension A1	mm	35	35	35	40	40	40
Dimension A2	mm	225	265	305	390	470	550
Dimension B	mm	175	215	255	335	415	495
Transducer weight	g	310	370	430	570	680	830
Core weight	g	30	35	40	55	65	80
Protection class		IP 65					

		DAE 300	DAE 400	DAE 500	DAE 600	DAE 800	DAE 1000
Dimension A1	mm	40	45	45	50	50	50
Dimension A2	mm	630	775	905	1040	1300	1580
Dimension B	mm	575	715	845	975	1235	1515
Transducer weight	g	970	1170	1370	1570	1970	2370
Core weight	g	95	115	135	155	200	240
Protection class		IP 65					

other technical data see page 1/2

<b>MESSOTRON</b> Hennig GmbH & Co. KG Industrie-Messtechnik Fried.-Eberl-Str. 37, Tel.: (06257) 82531 D 64342 Seeheim-Jugenheim	DAE series 25 ... 1000 mm (Version „G“)	Data sheet <b>32.01.00</b> Page 3
		Issue 09/03

Sensor customisation possible

Subject to change without prior notice  
 09/03