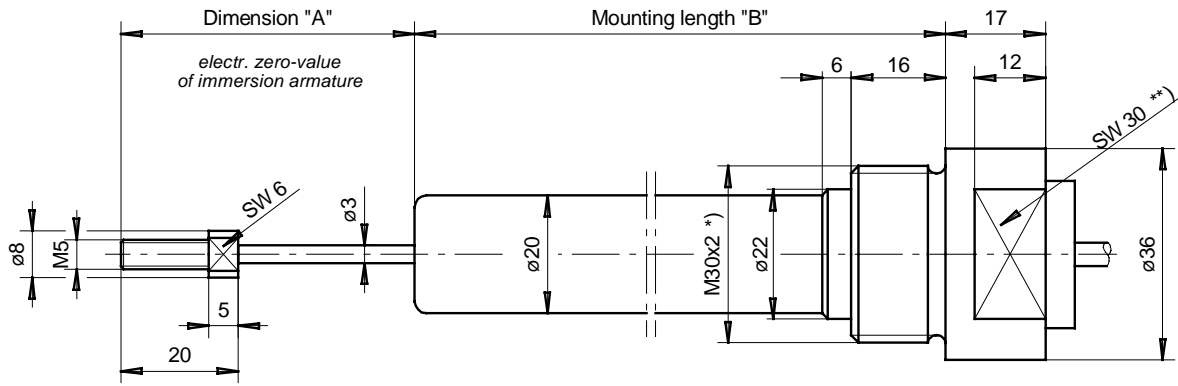


# Inductive Bulb Transducer

for cylinder mounting in hydraulics and pneumatics

## DGO (pressure tight up to 450 bar)

# MESSOTRON



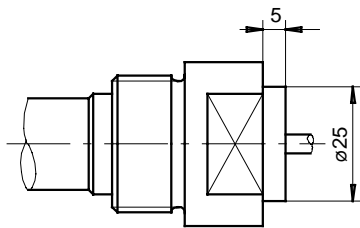
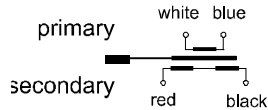
\*) Option: M30x1.5

\*\*) Option: Hexagon

### Wire interface

teflon wire 2.5 m long

Connection:

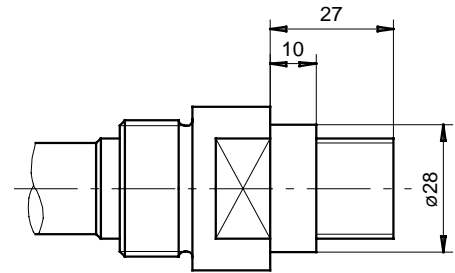
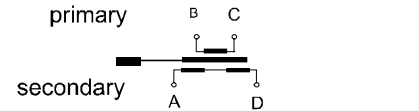


Example: DGO 500 K 0.25%

### Connector interface

mating connector supplied

Connection:



Example: DGO 500 AX 0.5%

		DGO 25	DGO 50	DGO 100	DGO 150	DGO 200	DGO 250	DGO 300
Electrical stroke	mm	$\pm 12,5$	$\pm 25$	$\pm 50$	$\pm 75$	$\pm 100$	$\pm 125$	$\pm 150$
Max. mechanical stroke	mm	30	55	105	160	210	260	320
Dimension A	mm	40	55	80	105	130	155	180
Mounting length B	mm	80	120	160	240	320	400	480
Transducer weight	g	550	600	650	750	900	1000	1150
Plunger weight	g	12	14	16	20	25	28	30
Excitation voltage	1... 5 Veff							
Excitation frequency *)	5 kHz, option: 10 kHz							
Static resolution	virtually infinite							
Recommended amplifier	MBI 46.31							
Linearity *)	$\pm 0,5\%$ F.S.O., option: $\pm 0,25\%$							
Temperature coefficient of zero	$\pm 0,04\%$ / 10K							
Temperature coefficient of span	$\pm 0,1\%$ / 10K							
Pressure resistance	operating pressure 450 bar; test pressure 500 bar							
Operational temperature *)	$-40^{\circ}\text{C}$ ... $+80^{\circ}\text{C}$ , Option: up to $120^{\circ}\text{C}$							
Protection class (DIN 40050)	IP 65							

\*) select option when ordering

**MESSOTRON**  
Hennig GmbH & Co. KG  
Industrie-Messtechnik  
Friedr.-Ebert-Str. 37, Tel.: (06257)82331  
D-64342 Seeheim-Jugenheim

DGO Series  
25 ... 1000 mm

Drawing  
28.34.03  
Page 1

Date 03/96  
Previous issues 28.34.01/02

Design of transducers can be customised

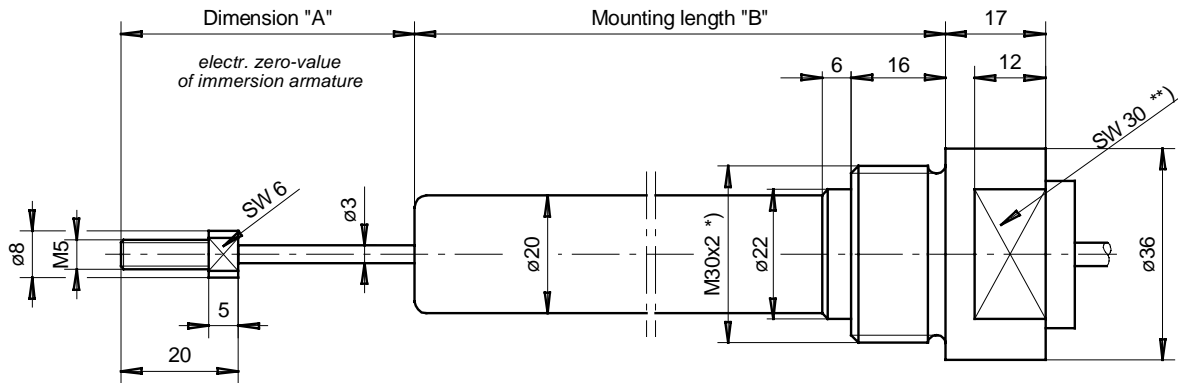
Subject to alteration

# Inductive Bulb Transducer

for cylinder mounting in hydraulics and pneumatics

## DGO (pressure tight up to 450 bar)

# MESSOTRON



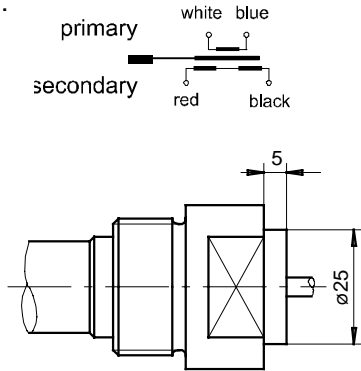
\*) Option: M30x1.5

\*\*) Option: Hexagon

### Wire interface

teflon cable 2.5 m long

Connection:

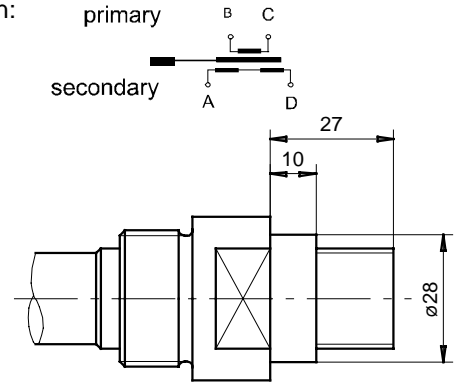


Example: DGO 500 K 0.25%

### Connector interface

mating connector supplied

Connection:



Example: DGO 500 AX 0.5%

		DGO 400	DGO 500	DGO 600	DGO 800	DGO 1000
Electrical stroke	mm	$\pm 200$	$\pm 250$	$\pm 300$	$\pm 400$	$\pm 500$
Max. mechanical stroke	mm	420	520	630	830	1030
Dimension A	mm	230	280	340	440	540
Mounting length B	mm	620	750	880	1140	1420
Transducer weight	g	1350	1500	1700	2100	2600
Plunger weight	g	35	40	50	65	80
Excitation Voltage		1 ... 5 Veff				
Excitation frequency *)		5 kHz option: 10 kHz		5 kHz		
Static resolution		virtually infinite				
Recommended amplifier		MBI 46.31				
Linearity *)		$\pm 0.5\%$ F.S.O.; option: $\pm 0.25\%$				
Temperature coefficient of zero		$\pm 0.04\%$ / 10K				
Temperature coefficient of span		$\pm 0.1\%$ / 10K				
Pressure resistance		operating pressure 450 bar, test pressure 500 bar				
Operational temperature *)		$-40^\circ\text{C}$ ... $+80^\circ\text{C}$ ; option: up to $120^\circ\text{C}$				
Protection class (DIN 40050)		IP 65				

\*) select option when ordering

**MESSOTRON**  
Hennig GmbH & Co. KG  
Industrie-Messtechnik  
Friedr.-Ebert-Str. 37, Tel.: (06257)82331  
D-64342 Seeheim-Jugenheim

DGO Series  
25 ... 1000 mm

Drawing  
28.34.03  
Page 2

Date 03/96  
Previous issues 28.34.01/02

Design of transducers can be customised

Subject to alteration