

Inductive Displacement Transducer

(LVDT)

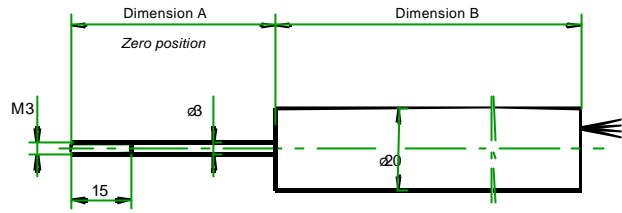
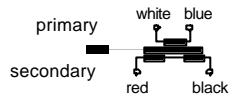
DK

MESSOTRON

Open leads

Teflon wires 250 mm long
Core channel continuous

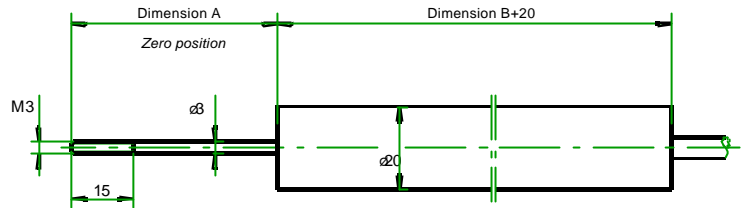
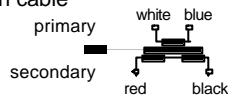
Option "/6 ": 6-wire version



Ordering example: DK 100 0,5%

axial cable

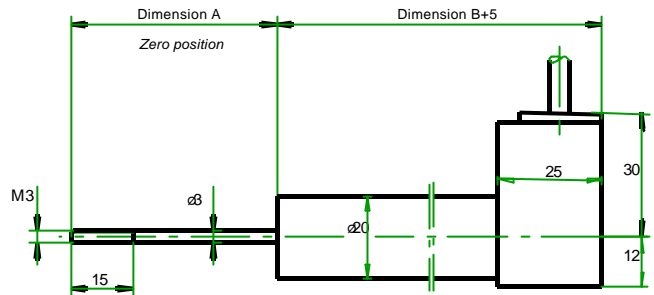
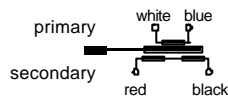
PE cable 2,5 m long; optional:
oil- and temperature resistant Teflon cable
Core channel continuous



Ordering example: DK 100 K 0,25%

radial cable

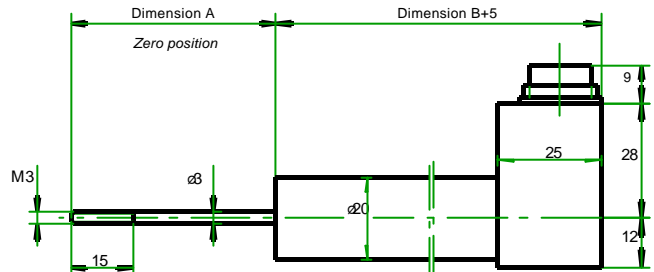
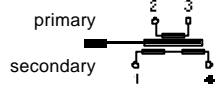
PE cable 2,5 m long; optional:
oil- and temperature resistant Teflon cable
Core channel continuous



Ordering example: DK 100 Q 0,5%

radial connector

Mating connector supplied
Core channel continuous



Ordering example: DK 100 R 0,25%

		DK 2	DK 5	DK 10	DK 20	DK 25	DK 50	DK 80	DK 100	DK 150	DK 200	DK 250
Nominal stroke	mm	±1	±2,5	±5	±10	±12,5	±25	±40	±50	±75	±100	±125
Mechanical stroke	mm	5	10	15	25	35	60	90	110	160	210	260
Dimension A	mm	30	40	40	40	40	50	80	100	130	150	180
Dimension B	mm	30	45	80	90	120	165	220	255	330	420	510
Transducer weight (approx.)	g	50	70	120	130	170	230	300	350	460	580	700
Plunger weight (approx.)	g	3	4	6	7	8	10	13	16	20	25	30
Excitation voltage (eff.)	up to 5 V											
Excitation frequency *)	5 kHz option: 10 kHz											
Linearity *)	±0,5% F.S.O. option: 0,25%											
Temperature coefficient of zero	±0,1% / 10K											
Temperature coefficient of span	±0,15% / 10K											
Operating temperature *)	-50°C ... +80°C option: up to 120°C											
Protection class	IP 64											

*) select option when ordering

MESSOTRON
Hennig GmbH & Co. KG
Industrie-Messtechnik
Friedr.-Ebert-Str. 37, Tel.: (05257) 52331
D 64342 Sochheim Jugenheim

DK series
2 ... 250 mm

Data sheet
27.21.03

Issue 11/01
Previous issue: 27.21.02

Sensor customisation possible

Subject to change without prior notice

09/03